

pipetman®

M



**ELECTRONIC
PIPETTE**

Guaranteed
Performance
and Accuracy

- | Precise
- | Easy-to-use
- | Reliable



PIPETMAN® M Guarantees On-Target Performance

Did You Know?

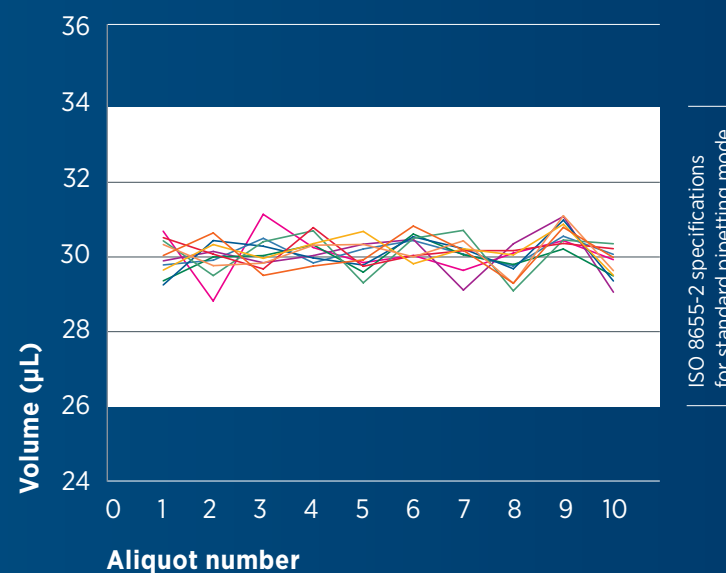
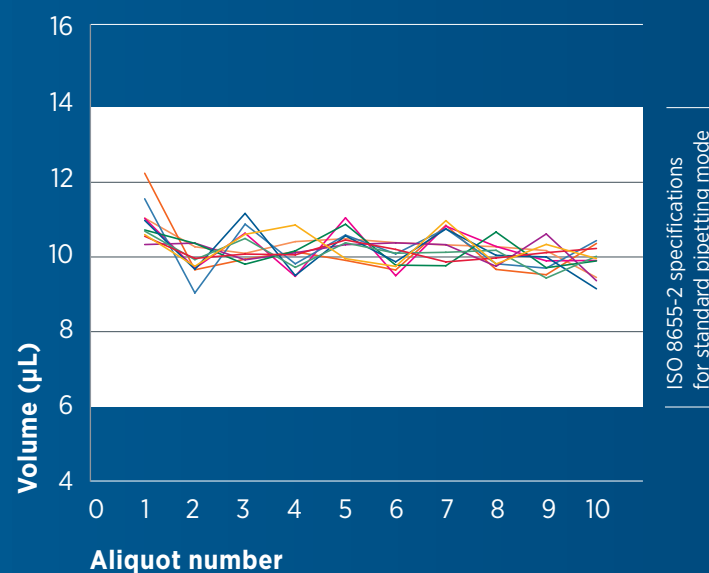
The results speak for themselves. We tested ten PIPETMAN® M pipettes in repetitive mode compared to the ISO 8655-2 specification for standard pipetting and every time it delivered a superior rate of precision inside the range.*

Currently there are no ISO specifications for repetitive pipetting. In their absence, Gilson has gone the extra mile to test our instruments to meet the ISO 8655-2 specifications for standard pipetting and we guarantee outstanding results.

PIPETMAN® M MEETS ISO STANDARDS 8655-2 ON EVERY ALIQUOT

Systematic error of ten pipettes P300M
10 µL aliquots

Systematic error of ten pipettes P300M
30 µL aliquots



Systematic error of 10 PIPETMAN M 300 µL pipettes in repetitive pipetting mode with PIPETMAN® DIAMOND Tips D300, applying the appropriate pipetting technique.

Learn more at:
www.gilson.com/guaranteedperformance



Pipette With Less Effort and More Comfort



A LARGE VOLUME RANGE

Eight single channels (from 0.5 μ L to 10 mL) and twelve multichannels (from 0.5 μ L to 1200 μ L).



INTUITIVE INTERFACE

Easy-to-use pipette with five styles of pipetting modes: pipet, repetitive, mix, reverse, and custom.



LIGHTWEIGHT AND COMFORTABLE

The ergonomic design combined with a short pipetting stroke distance helps reduce repetitive strain injury (RSI).



NO DOWNTIME

Use while charging without compromising performance.



CREATE AND SAVE PROTOCOLS QUICKLY

Switch into custom mode to create a new protocol. Save and transfer your protocol securely into PIPETMAN[®]M Software app for recall at a later date.



SIMPLIFY YOUR WORKFLOW

Make your routine easier when performing qPCR, ELISA, NGS, cell culture, and many other applications.



SECURE FIT DESIGN

Unique tip holder* allows for a perfect fit and flawless performance.



*Gilson PIPETMAN[®] DIAMOND Tips are recommended for best tip fit.



Empower Your System with PIPETMAN® M Accessories

To support the work you do in the lab, we offer accessories that help facilitate your entire pipetting procedure – including making sure you are always ready with our charging adapter solutions.



PIPETMAN® M POWER CARROUSEL

Store and charge up to five PIPETMAN® M pipettes at one time with this convenient rotating stand, occupying minimal bench space.

Part number FB1001



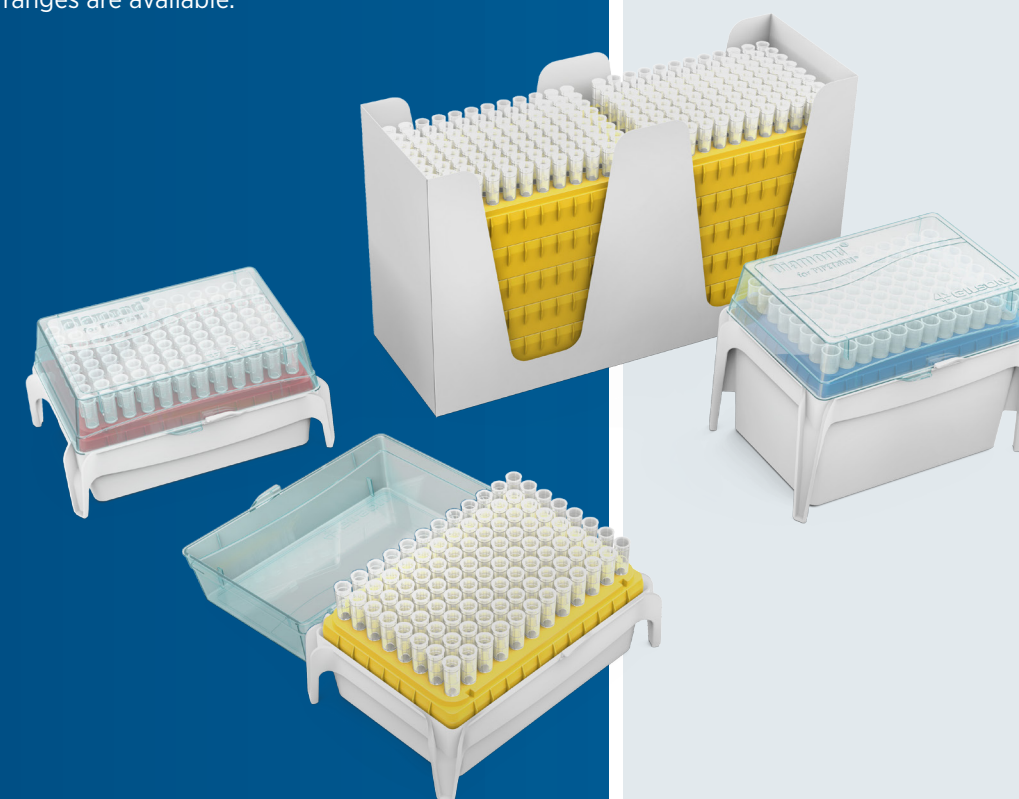
PIPETMAN® CARROUSEL STAND AND PIPETMAN® M STAND ADAPTER

Conveniently charge single and multichannel pipettes on our standard carousel stand with the charging stand adapter.

Part number F807023

RELY ON GILSON PIPETMAN® DIAMOND TIPS

Gilson PIPETMAN® DIAMOND Tips deliver the quality and reliability you need. A variety of packaging options, tip types, and volume ranges are available.



Your Gilson pipetting system				Volume range		Maximum Permissible Errors (standard pipetting mode)				
PIPETMAN® M model	Part number	PIPETMAN® DIAMOND Tips compatibility		PIPET Mode	REPETITIVE Mode	Gilson			ISO 8655-2	
						Volume	Systematic error (µL)	Random error (µL)	Systematic error (µL)	Random error (µL)
P10M	F81022	D10	DF10	0.5-10 µL	0.5-10 µL	0.5	± 0.040	≤ 0.013	± 0.12	≤ 0.08
						1	± 0.025	≤ 0.012	± 0.12	≤ 0.08
		5	± 0.060			≤ 0.020	± 0.12	≤ 0.08		
		10	± 0.080			≤ 0.025	± 0.12	≤ 0.08		
P20M	F81023	D200	DF30	2-20 µL	2-20 µL	2	± 0.075	≤ 0.025	± 0.2	≤ 0.1
						10	± 0.100	≤ 0.035	± 0.2	≤ 0.1
		20	± 0.150			≤ 0.050	± 0.2	≤ 0.1		
P100M	F81013	D200	DF100	5-100 µL	5-100 µL	5	± 0.35	≤ 0.10	± 0.8	≤ 0.3
						10	± 0.30	≤ 0.10	± 0.8	≤ 0.3
		50	± 0.38			≤ 0.12	± 0.8	≤ 0.3		
		100	± 0.40			≤ 0.15	± 0.8	≤ 0.3		
P200M	F81024	D200	DF200	20-200 µL	5-200 µL	20	± 0.40	≤ 0.15	± 1.6	≤ 0.6
						100	± 0.80	≤ 0.22	± 1.6	≤ 0.6
		200	± 1.00			≤ 0.26	± 1.6	≤ 0.6		
P300M	F81014	D200	DF200	20-300 µL	10-300 µL	20	± 0.80	≤ 0.16	± 4.0	≤ 1.5
						30	± 0.70	≤ 0.20	± 4.0	≤ 1.5
		150	± 0.90			≤ 0.23	± 4.0	≤ 1.5		
		300	± 1.05			≤ 0.30	± 4.0	≤ 1.5		
P1200M	F81015	D1000	DF1000	100-1200 µL	20-1200 µL	100	± 2.5	≤ 0.4	± 16	≤ 6.0
						120	± 2.4	≤ 0.4	± 16	≤ 6.0
		600	± 3.6			≤ 0.8	± 16	≤ 6.0		
		1200	± 6.0			≤ 1.2	± 16	≤ 6.0		
P5000M	F81016	D5000		500-5000 µL	100-5000 µL	500	± 10	≤ 2	± 40	≤ 15.0
						2500	± 15	≤ 4	± 40	≤ 15.0
						5000	± 25	≤ 7	± 40	≤ 15.0
P10 mL M	F81017	D10 mL		1-10 mL	200 µL-10 mL	1 mL	± 25	≤ 4	± 60	≤ 30.0
						5 mL	± 30	≤ 8	± 60	≤ 30.0
						10 mL	± 50	≤ 12	± 60	≤ 30.0
P8x10M P12x10M	F81025	D10	DF10	0.5-10 µL	0.5-10 µL	0.5	± 0.05	≤ 0.02	± 0.24	≤ 0.16
						1	± 0.04	≤ 0.02	± 0.24	≤ 0.16
	5	± 0.08	≤ 0.04			± 0.24	≤ 0.16			
	10	± 0.10	≤ 0.06			± 0.24	≤ 0.16			
P8x20M P12x20M	F81027	DL10	DFL10	1-20 µL	1-20 µL	1	± 0.08	≤ 0.05	± 0.4	≤ 0.2
						10	± 0.15	≤ 0.10	± 0.4	≤ 0.2
	20	± 0.25	≤ 0.12			± 0.4	≤ 0.2			
P8x100M P12x100M	F81018	D200		10-100 µL	5-100 µL	10	± 0.25	≤ 0.14	± 1.6	≤ 0.6
						50	± 0.50	≤ 0.20	± 1.6	≤ 0.6
	100	± 0.80	≤ 0.25			± 1.6	≤ 0.6			
P8x200M P12x200M	F81029	D200	DF100	20-200 µL	5-200 µL	20	± 0.50	≤ 0.16	± 3.2	≤ 1.2
						100	± 1.00	≤ 0.30	± 3.2	≤ 1.2
	200	± 2.00	≤ 0.50			± 3.2	≤ 1.2			
P8x300M P12x300M	F81031	D200	DF200	10-300 µL	10-300 µL	10	± 1.00	≤ 0.18	± 8.0	≤ 3.0
						30	± 1.00	≤ 0.18	± 8.0	≤ 3.0
	150	± 1.50	≤ 0.375			± 8.0	≤ 3.0			
	300	± 2.40	≤ 0.45			± 8.0	≤ 3.0			
P8x1200M P12x1200M	F81020	D1200	DF1200	50-1200 µL	50-1200 µL	50	± 4.0	≤ 0.7	± 32	≤ 12
						120	± 4.0	≤ 0.7	± 32	≤ 12
	600	± 6.0	≤ 1.5			± 32	≤ 12			
	1200	± 9.6	≤ 1.8			± 32	≤ 12			

Gilson specifications set with Gilson PIPETMAN® DIAMOND Tips.

The maximum permissible errors always apply to the entire pipetting system that includes piston pipette and tip. When using pipette tips other than Gilson PIPETMAN® DIAMOND Tips with PIPETMAN® pipettes, Gilson specifications do not apply. Under these conditions:

- Gilson volumetric specifications in standard pipetting (PIPET mode) are guaranteed with a performance exceeding ISO 8655-2 recommendations for this mode.

- In the absence of ISO recommendations for repetitive pipetting mode for air-displacement pipettes, Gilson volumetric specifications for repetitive pipetting (REPETITIVE mode) are guaranteed within ISO 8655-2 recommendations for standard pipetting (Cf. ISO 8655-2 table 1).

Gilson, Inc.

3000 Parmenter Street · PO Box 620027 · Middleton, WI 53562-0027, USA
T 608-836-1551 or 800-445-7661 · F 608-831-4451

Gilson S.A.S

19 avenue des Entrepreneurs · 95400 Villiers-le-Bel, France
T +33 (0) 1 34 29 50 00 · F + 33 (0) 1 34 29 50 20